

SFA

121

04.05
IND1-01



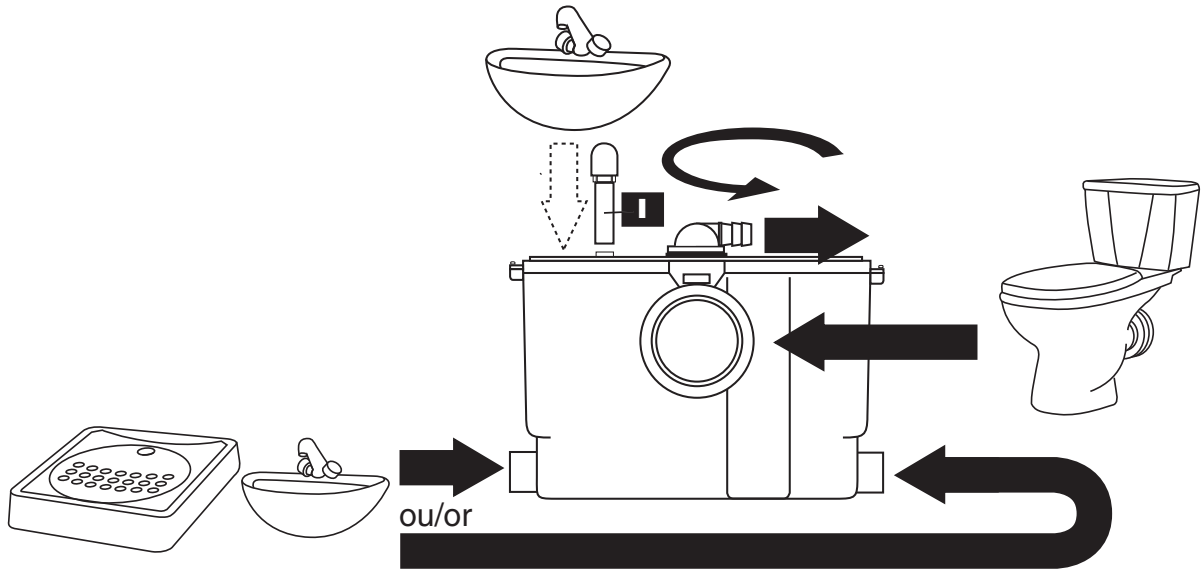
A lire attentivement et à conserver à titre d'information • The user should retain these instructions for future reference

UK

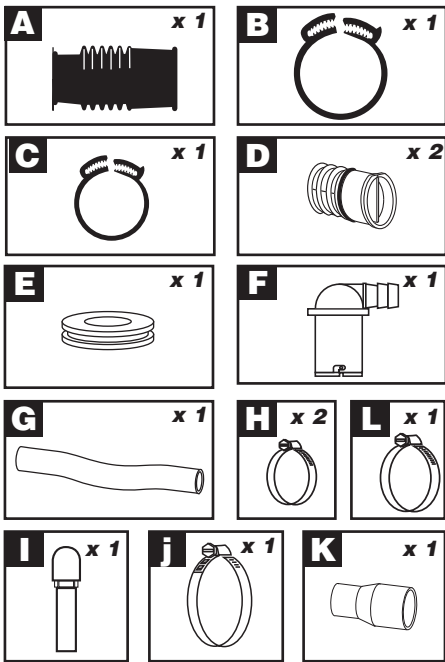
NOTICE D'INSTALLATION INSTALLATION INSTRUCTIONS

SANISLIM®

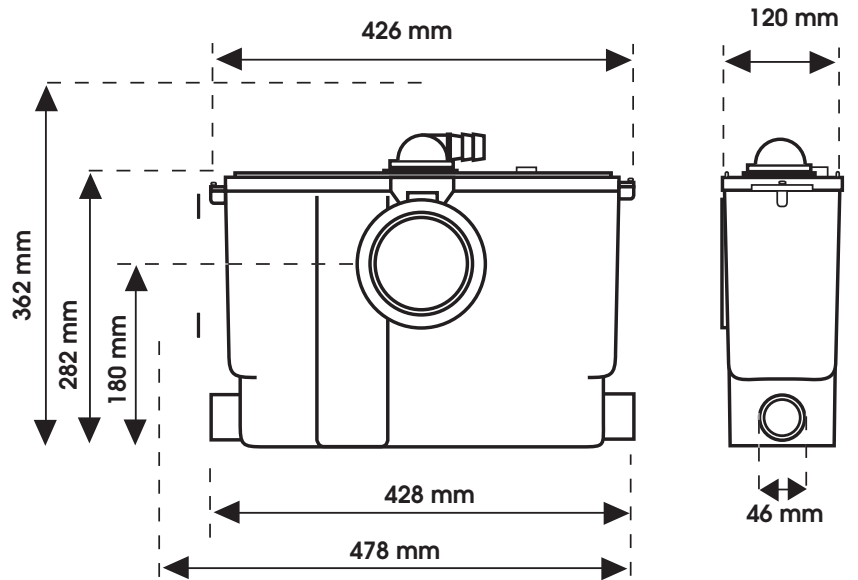
1



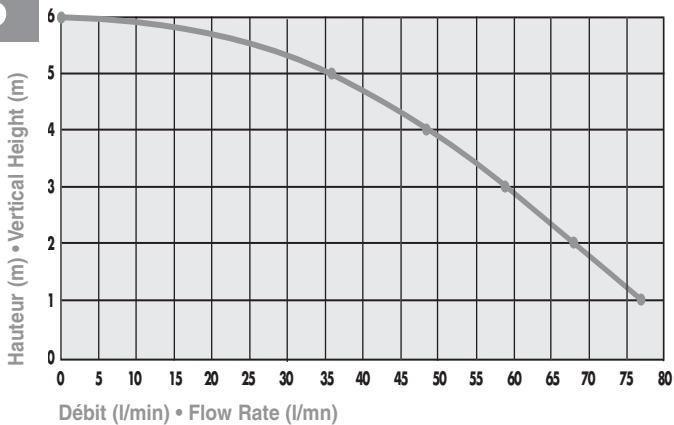
3



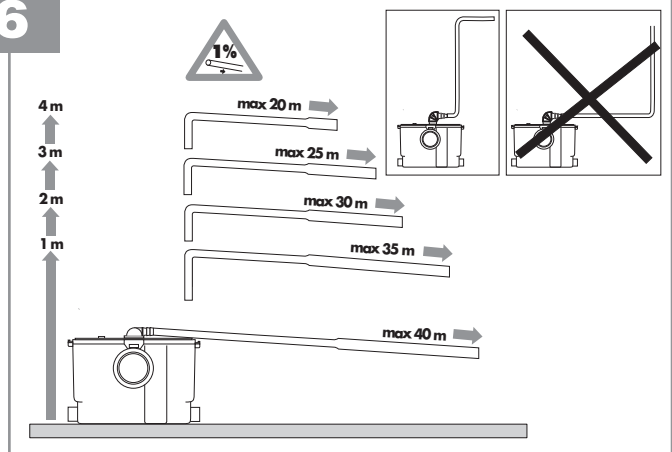
4



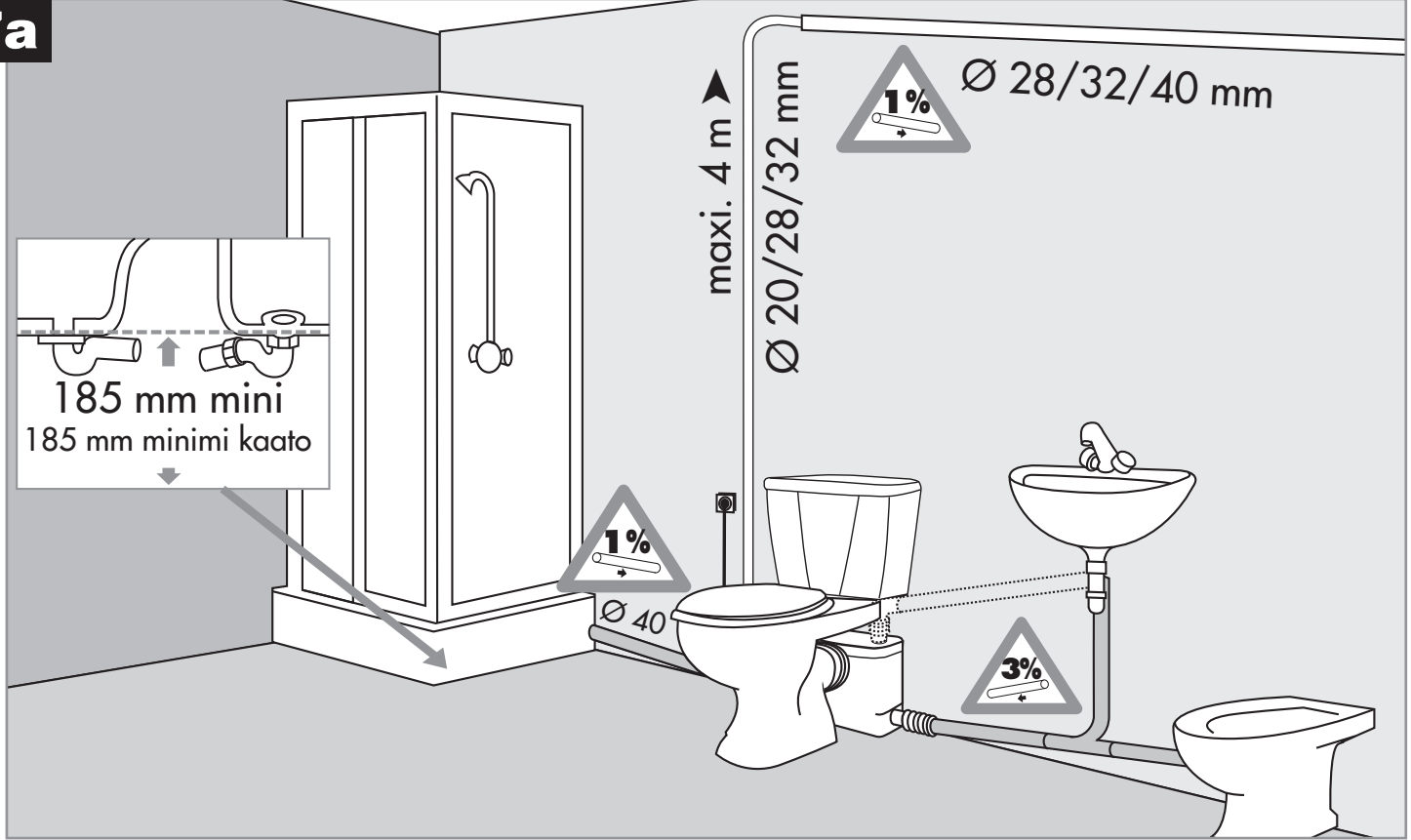
5



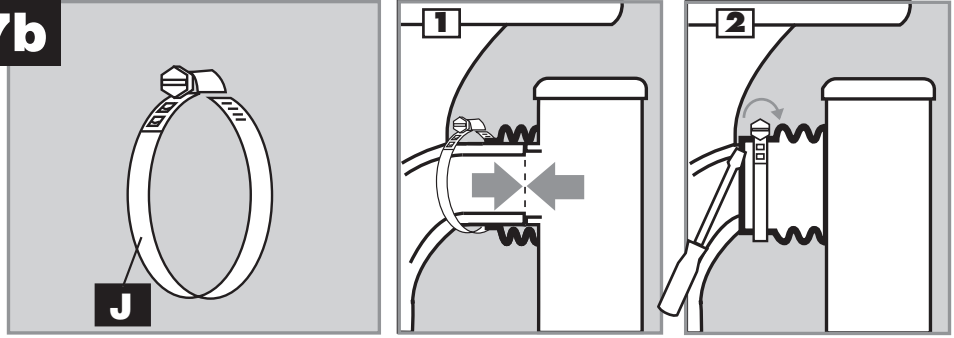
6



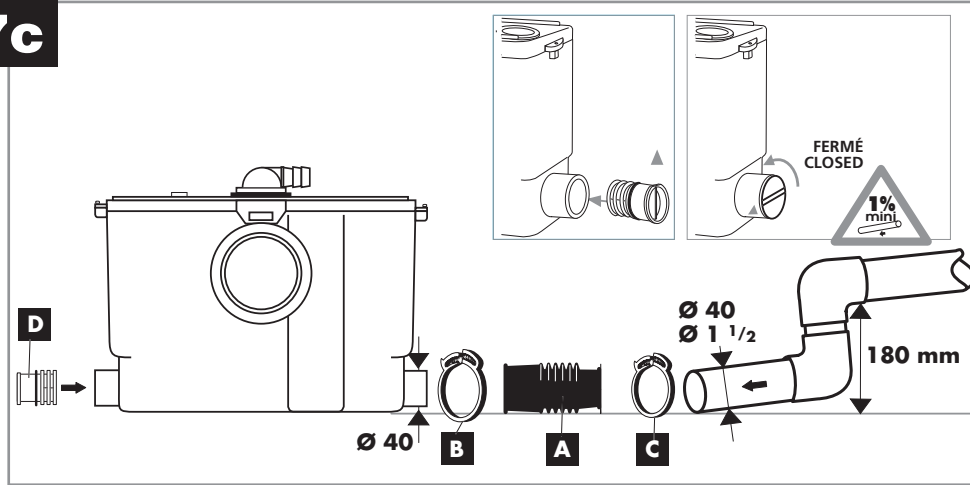
7a



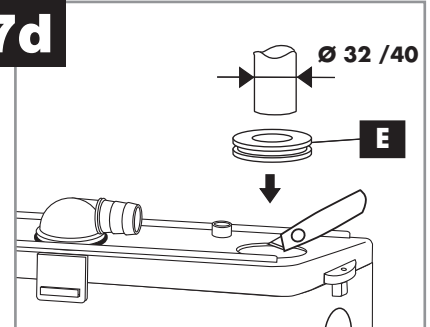
7b



7c



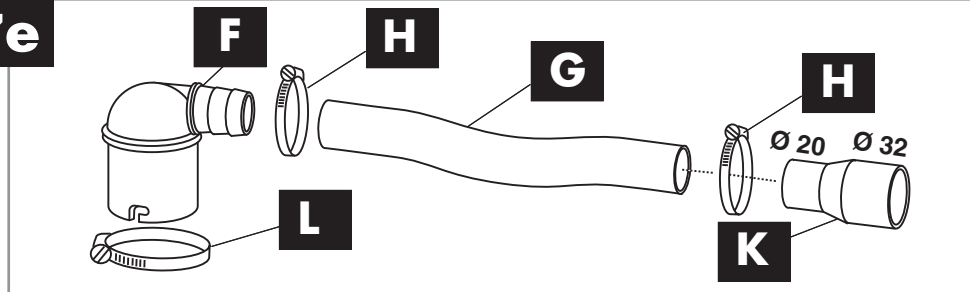
7d



13



7e



1 DESCRIPTION

SANISLIM® is a compact pump/macerator specially designed to take the waste from a wall hung or back to wall WC pan.

SANISLIM® will pump away the waste from one WC, one washbasin and one shower.

SANISLIM® is for domestic use. Installed and used correctly, **SANISLIM®** will give consistent and reliable service.

WARNING: Do not use **SANISLIM®** with a shower discharging at more than 15 litres per minute.

Please note the following warning signs:



Possible danger to personnel,



Warning of possible electrical hazard.

WARNING: This is a general warning that failure to follow instructions could result in poor functioning of the unit.

2 TECHNICAL DATA

	SANISLIM®
Application	1 WC + Washbasin + Shower
Maximum Vertical Pumping	4 m
maximum Horizontal Pumping	40 m
Normal Power Rating	400 W
Electric Class	I
Type	x11
Noise Level	57dBA
Degree of protection	IP44
Net Weight	4,8 KG

3 LIST OF ACCESSORIES INCLUDED- see drawings.

4 DIMENSIONS- see drawings.

5 PERFORMANCE CURVE- see drawings.

6 VERTICAL/HORIZONTAL PUMPING COMBINATIONS- see drawings.

7 INSTALLATION

WARNING: Allow sufficient clearance and access to enable unit to be removed for possible maintenance, and should be installed by a qualified person.

7a EXAMPLE OF INSTALLATION

7b CONNECTION TO A WC

- 1 Pull the flexible sleeve over the pan spigot
- 2 Position the jubilee clip over the edge of the flexible sleeve, and tighten with a screwdriver

WARNING: **SANIFLO®** must always be connected to a WC.

7c CONNECTION TO SIDE-INLETS (SHOWER AND WASHBASIN)

- To make the connection to the side inlets, use connector **A**. Secure it with plastic clips **B** and **C**.

- Cap off unused inlets with plugs **D** (pre-grease the joint before fitting).



WARNING:

When fitting a shower, ensure that the underside of the tray is at least 12cm above floor level (slot of 1% minimum).

7c CONNECTION OF A WASHBASIN

The washbasin can be connected in two ways.

To one of the side inlets (see **7c**)

To the inlet on the lid (the premarked opening has to be cut out)

- Use a suitable cutter to make the opening in the lid.
- There is a ridge where the hole has been partially pre-cut. Cut the hole with care, and de-burr it, to avoid leaks when adapter **E** is fitted.
- Insert the adapter **E** into the lid.
- Slide the washbasin waste pipe into the adapter (it will accept 32mm or 40mm pipe)

7c CONNECTION OF THE DISCHARGE PIPE

- Turn the no-return elbow lockwire to the direction required.
- Fit the elbow **F** to the end of **7c** and secure with jubilee clip **L**.
- Connect the 20/26 white pipe to the elbow and other end to 22 mm (3/4") copper or rigid UPVC pipe and secure with jubilee clips **L**. (see drawings **7a**).
- The flexible discharge pipe allows connection to the rigid drain pipe (22/23) while avoiding transmission of vibration. The curve of this pipe must be kept to a minimum in order to avoid the risk of kinking.
- We would recommend that a drain-off point is installed to allow the discharge pipework to be drained down before any service work.
- If the discharge pipework runs to a level considerably lower than **SANISLIM®** unit, the resultant syphoning effect can suck out the water seal in the unit. Fitting an air admittance valve (BBA approved) at the high point of the pipe run will overcome this problem.

WARNING: Use smooth pulled bends for discharge pipework, or 2 x 45° bends in series.



7f ELECTRICAL CONNECTION

The electrical installation should be carried out by a qualified person, and conform to BS7671 1992 requirements for electrical installation.

SANISLIM® requires a 230v/240v single-phase AC50 HZ supply. (UK specification) and should be connected to an unswitched fused wiring connector protected by a 5 amp fuse or circuit breaker (30mA)

The wires in the mains lead of **SANISLIM®** are coloured as follows:

Brown	=	Live
Blue	=	Neutral
Green/Yellow	=	Earth

8 COMMISSIONING THE UNIT

Once all electrical and plumbing connections have been checked, flush the WC.

The motor of **SANISLIM®** should operate from 10 to 20 seconds, depending on the height and length of the discharge pipework. If it runs for more than 25 seconds, check that the discharge pipe is not kinked or blocked.



To check that all connections are watertight, run the WC, shower, washbasin, one after the other for a few minutes to represent normal usage. Ensure there are no leaks.
Do not secure the access panel until all the connections have been checked.

WARNING: There should be no dripping of water from the WC cistern or taps. If there is, this will cause the unit to activate repeatedly as it pumps the water away.

9 USAGE
A WC fitted with **SANISLIM®** does not require any special maintenance. **SANISLIM®** will operate automatically as soon as the required level of water enters the case.
SANISLIM® will pump away the waste from a domestic WC, washbasin and shower.
It is not suitable for heavy commercial/industrial applications.

WARNING: If **SANISLIM®** runs with hot water for a prolonged time, the thermal cut out device will stop the motor from operating. In this case, it will take approximately one hour for the motor and water to cool down, after which it will automatically re-activate.



WARNING: **SANISLIM®** should only be used for the evacuation of normal human waste, toilet paper and household WC cleansers. Damage may occur to the machine if the following are disposed of in the WC: Cotton wool, tampons, sanitary towels, condoms, wet wipes, kitchen towels as well as other fabric or hard items.
A build-up of hair can cause problems, so a hair trap should be fitted to a shower.
Finally, solvents, acids and other chemicals can also damage the unit, and will invalidate the warranty.

10 CARE OF YOUR SANISLIM®
• Normal household bleaches/WV cleansers can be used with **SANISLIM®**.
• To avoid the build up of limescale in the unit, use the following procedure:
• Disconnect the power supply to the unit.
• Pour 3 to 4 litres of water mixed with a strong solution of descalent/spirit of salts into the WC pan.
• Leave it to stand for 1 or 2 hours, then reconnect the electric supply.
• Flush several times to clear.

The frequency of this operation will depend on the hardness of the water in your locality. We would recommend this be done about twice a year.



WARNING: Do not put any acids, caustic sodas or solvent down **SANISLIM®**.

11 SERVICE
Disconnect the electric supply before attempting any work on the unit.

SANISLIM® does not require any particular maintenance.
Any service work on the unit should be carried out by a registered Saniflo engineer.
This is particularly important if changing the electrical cable is involved.

12 FAULT-FINDING CHART

For the most part, any inconsistencies in the operation of the unit will be minor and easily rectified. Please refer to the chart below. If the problem cannot easily be remedied in this way, please call our Service Organisation.

SYMPTOM	PROBABLE CAUSES	REMEDIES
• The motor intermittently activates.	• <i>The WC cistern or taps are dripping.</i> • <i>The external non-return valve D is faulty.</i>	• Check the appropriate washers/seals on the cisterns/taps etc. • Clean or replace the non-return valve.
• The water in the WC pan goes down very slowly.	• <i>The inner grille is clogged.</i> • <i>The opening from WC pan to the unit is blocked.</i>	• Call a service engineer to clear the grille. • Unblock the WC to unit connection.
• The motor operates, but continues to run for a long time.	• <i>The length or height of the installation is over specification, or there are too many bends/elbows.</i> • <i>The pump itself is blocked.</i>	• Check the installation. • Call a service engineer to unblock the unit.
• The motor does not activate.	• <i>The electrical supply is switched off or faulty.</i> • <i>The motor is defective.</i>	• Restore the electrical supply. • Call a service engineer to inspect the motor.
• The motor emits a rattling or crunching sound.	• <i>A foreign object has entered into the grille via the WC pan.</i>	• Call a service engineer to remove the foreign object from the unit.
• The motor hums, but does not turn.	• <i>The capacitor or motor is defective.</i>	• Call a service engineer to inspect the motor.

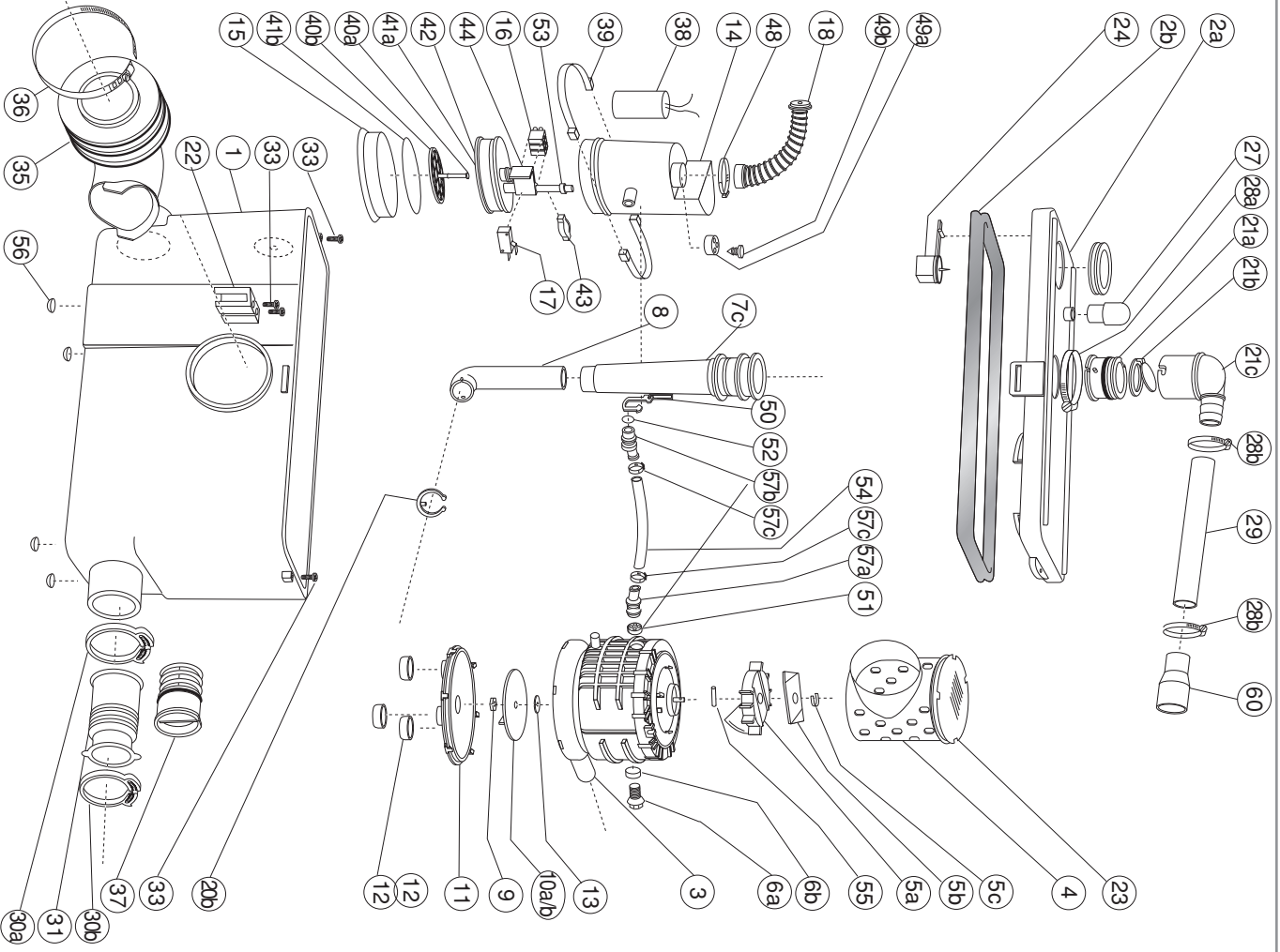
13 REMOVING SANISLIM® FROM THE WC SUITE

- (A) **Disconnect the electrical power supply.**
- (B) Turn off the water feed to the WC cistern. Bail out as much water as possible from the cistern.
- (C) Disconnect the discharge pipe.
- (D) Disconnect the inlet connections.
- (E) Ease the flexible connector off the WC pan spigot and slide **SANISLIM®** out from behind the WC.

Note: To ease replacement of the lid onto **SANISLIM®** case, lubricate the rubber seal with liquid soap before replacing.

Do not reconnect the electrical supply until the re-installation of the unit is complete.

14 GUARANTEE
SANISLIM® carries a 2-year guarantee subject to the unit being installed and used in accordance with these instructions.



FRANCE

SOCIETE FRANÇAISE D'ASSAINISSEMENT
8, rue d'Aboukir
75002 Paris
Tél. 01 44 82 39 00
Fax 01 44 82 39 01

UNITED KINGDOM

SANIFLO Ltd.,
Howard House, The Runway
South Ruislip (Middx.,)
HA4 6 SE
Tel. (0208) 842 0033
Fax (0208) 842 1671
Telex: 934 335 G SANFLO

ESPAÑA

GRUPO SFA
C/ Cuzco, 41
08030 Barcelona
Tel. (93) 381 85 97
Fax (93) 462 18 96

DEUTSCHLAND

SFA SANIBROY GmbH
Waldstr. 23 Geb. B5
63128 Dietzenbach
Tel. (060 74) 30928-0
Fax (060 74) 30928-90

BENELUX

SFA BENELUX B.V.
Volltaweg 4
6101 XK Echt
Tel. +31 475 487100
Fax +31 475 486515

CANADA

SFA-SANIFLO INC.
1-685 Speedvale Avenue West
Guelph ON - N1K 1E6
Tel. +1 519 824 1134
Fax +1 519 824 1143

SVERIGE

SANIFLO AB
BOX 86
S-133 22 Solstjööbaden
Tel. 08-717 5680
Fax 08-717 8686

ITALIA

SFA ITALIA spa
Via del Benessere, 9
27010 Sizzano (PV)
Tel. 03 82 61 81
Fax 03 82 61 8200

РОССИЯ

SFA РОССИЯ
101000 Москва
Компаний пер.
9а, ком. 103
Тел. (095) 921 87 71
факс (095) 921 87 71

IRELAND

SANIRISH Ltd
IDA Industrial Estate
Edenderry
County Offaly
Tel. + 353 46 9733 102
Fax + 353 46 97 33 093

POLSKA

SFA POLAND
ul. Kolejowa 33
05-092 Łomianki/Warszawa
Tel. (+4822) 732 00 32
Fax (+4822) 751 35 16

www.sfa.biz

SERVICE HELPLINES

	TEL	FAX
France	☎ N° Azur 0 810 05 90 02 1 UT par appel	03 44 94 46 19
United Kingdom	(08457) 650011 (CALL FROM A LANDLINE)	(0208) 8421671
Canada	+1 800 363 5874	+1 519 824 1143
Deutschland	0800 82 27 82 0	(060 74) 30928-90
España	(93) 381 85 97	(93) 462 18 96
Benelux	+31 475 487100	+31 475 486515
Italia	800 636394	+39 0382 618200
Sverige	08-744 15 18	08-717 8686
Россия	(095) 921 87 71	(095) 921 87 71
Ireland	+ 353 46 97 33 102	+ 353 46 97 33 093
Polska	(+4822) 732 00 33	(+4822) 751 35 16