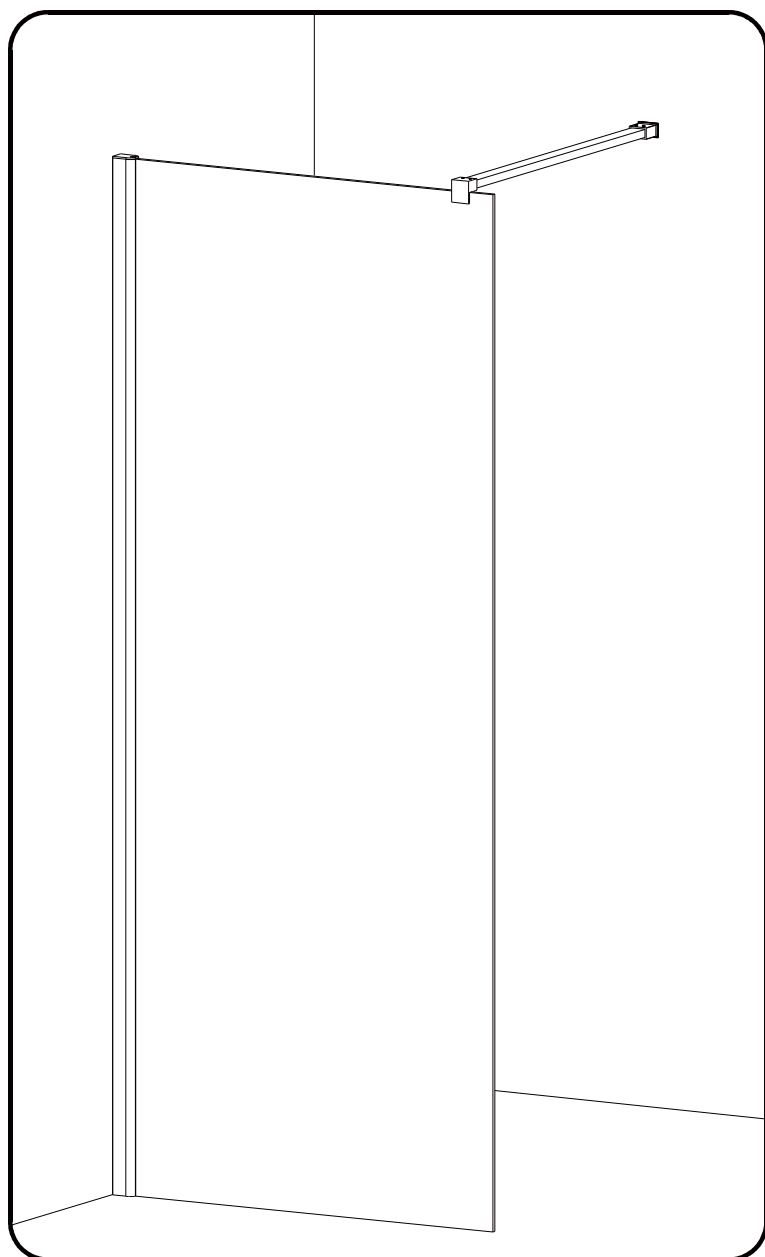


# Wetroom Front Panel

## INSTALLATION INSTRUCTIONS



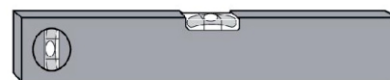
### Tools Required



**Drill**



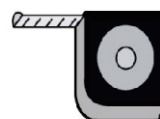
6mm Masonry Drill  
3.2mm HSS Drill



**Spirit level**



**Sealant Gun**



**Tape Measure**



**Pencil**



**PH2 TYPE  
Screwdriver**

Please not hand tools NOT supplied.

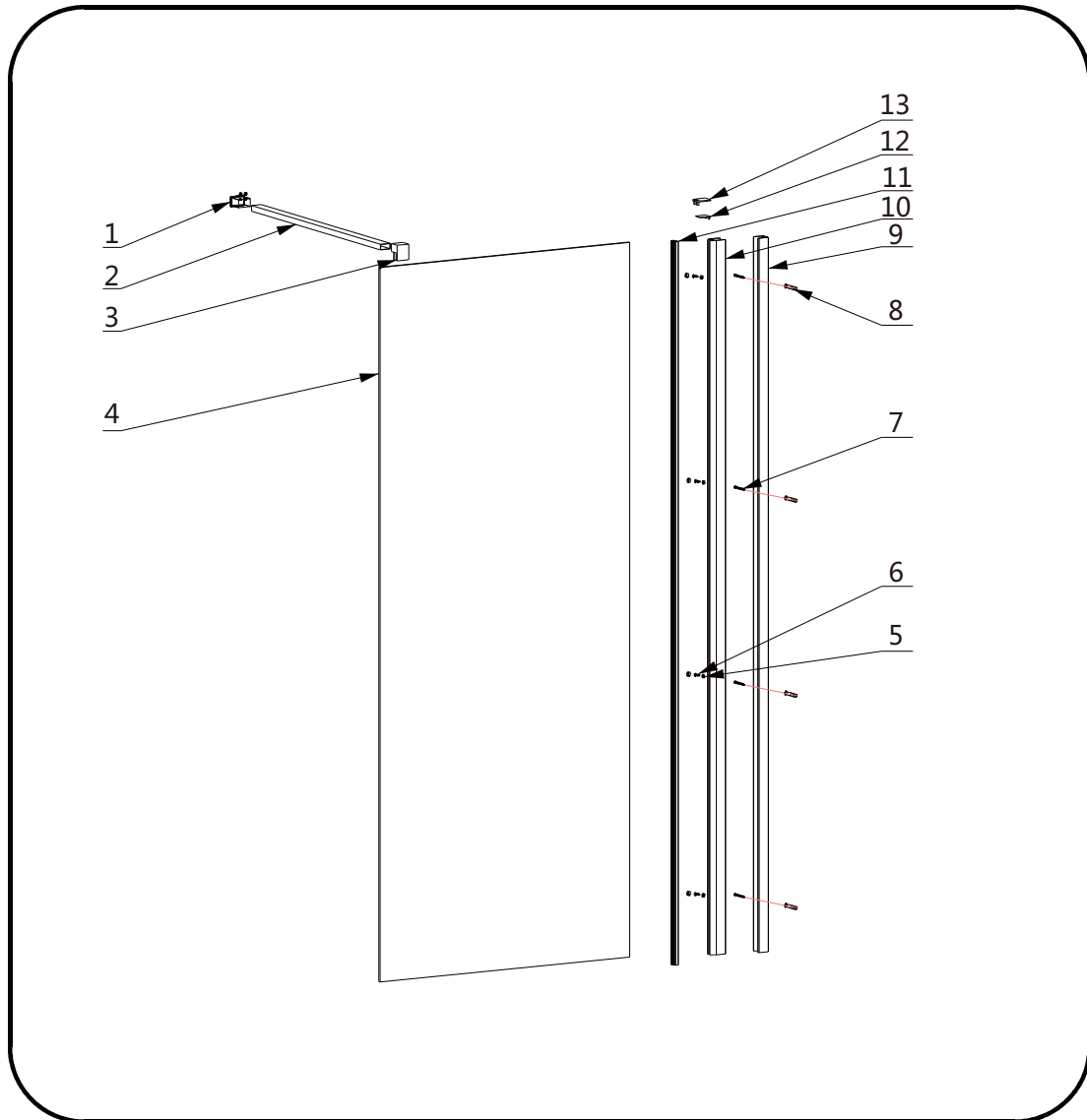
## IMPORTANT

These instructions assume that installation is done against solid/tiled walls.

The wall plugs supplied with the installation kit are for use on solid walls. Hollow or stud-partition walls will require alternative fixings. Please consult with a reputable trades person or hardware supplier for the correct type of fixing.

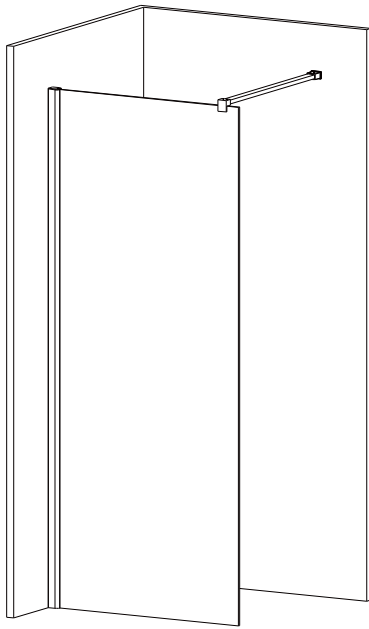
It may also be necessary to consult your tiling supplier about the correct method drilling your tiles.

## Components And Box Contents

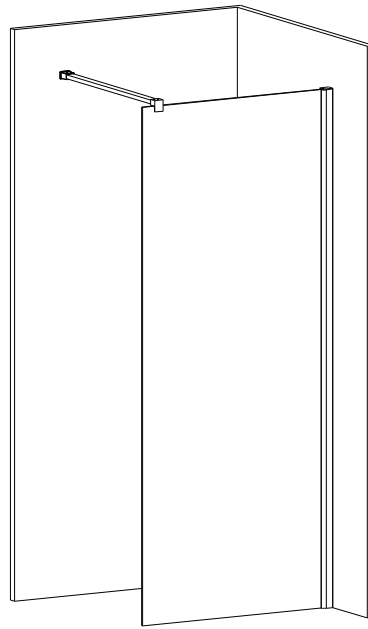


NO.	Code	Description	Qty	NO.	Code	Description	Qty
1	BNWF-01	Wall Bracket	1	8	BNWF-08	Wall Plug	4
2	BNWF-02	Bracing Bar	1	9	BNWF-09	Wall Profile	1
3	BNWF-03	Glass Clipper	2	10	BNWF-10	Fixed Profile	1
4	BNWF-04	Front Glass Panel	1	11	BNWF-11	U-Shape Seal	1
5	BNWF-05	Screw cover Caps	4	12	BNWF-12	Cover Cap A	1
6	BNWF-06	Screw M4*10	4	13	BNWF-13	Cover Cap B	1
7	BNWF-07	Screw M4*30	4				

Left

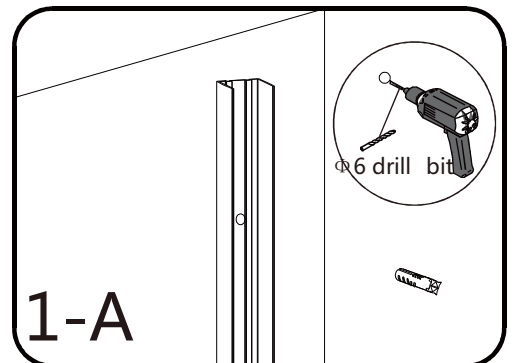
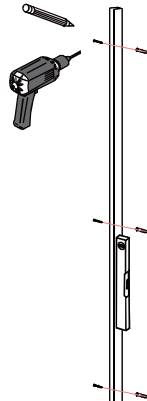


Right

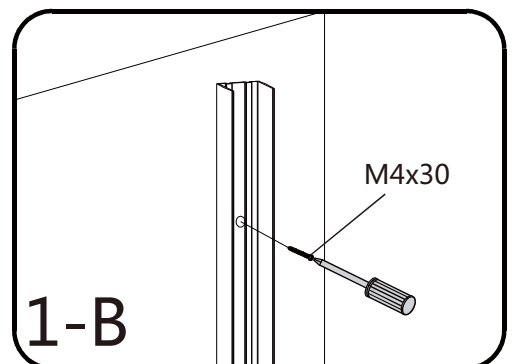


## Installation Steps

Step1

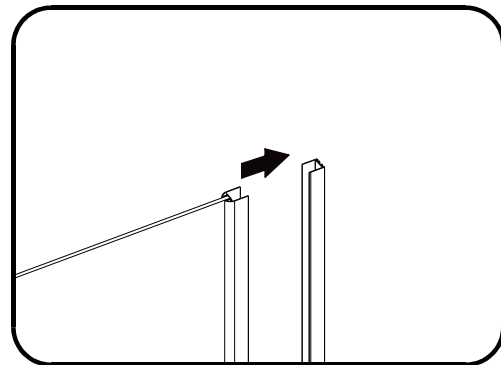


1-A

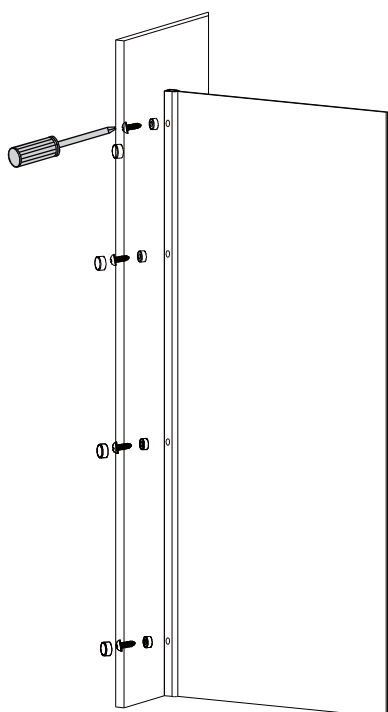


1-B

## Step2



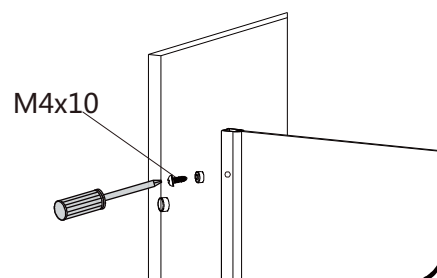
## Step3



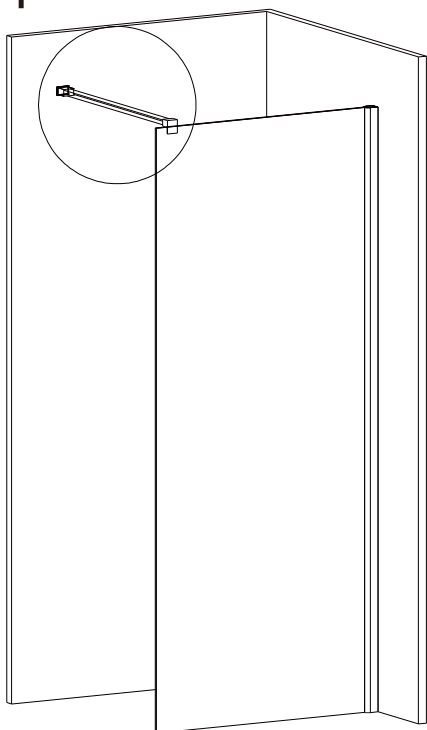
### 3-A



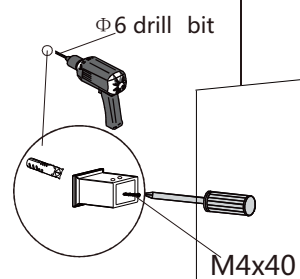
### 3-B



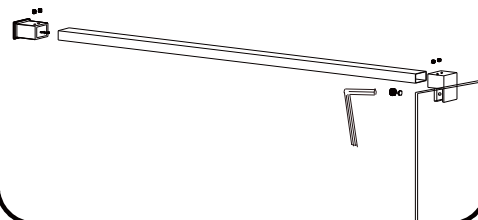
## Step4



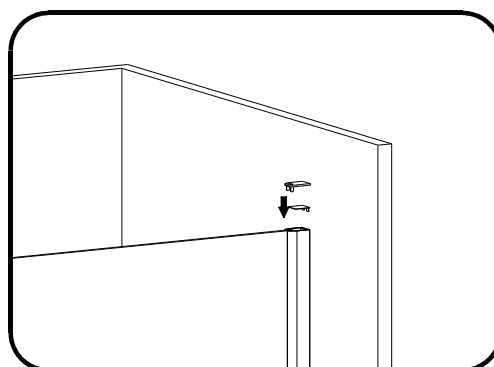
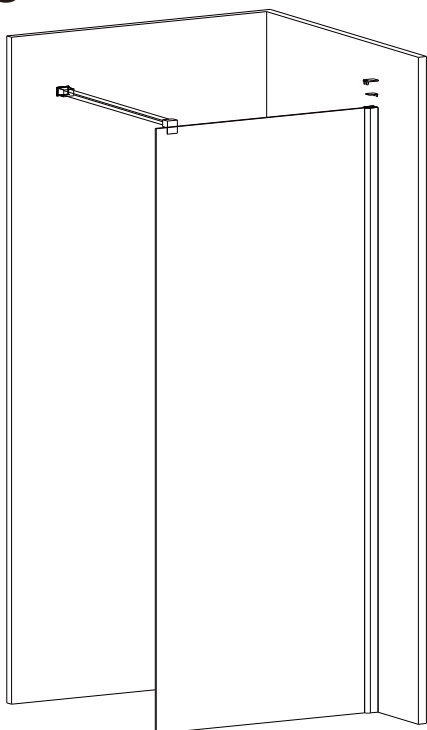
## 4-A



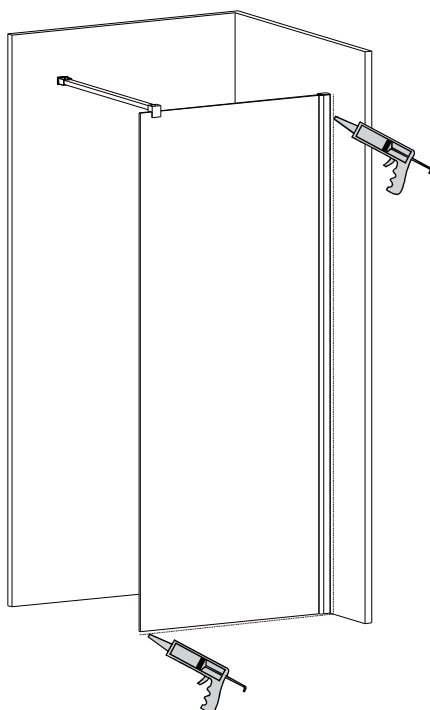
## 4-B



## Step5



## Step6



**Allow 24 hours for silicone to dry before use.**

**Silicone on the outside edge only**