

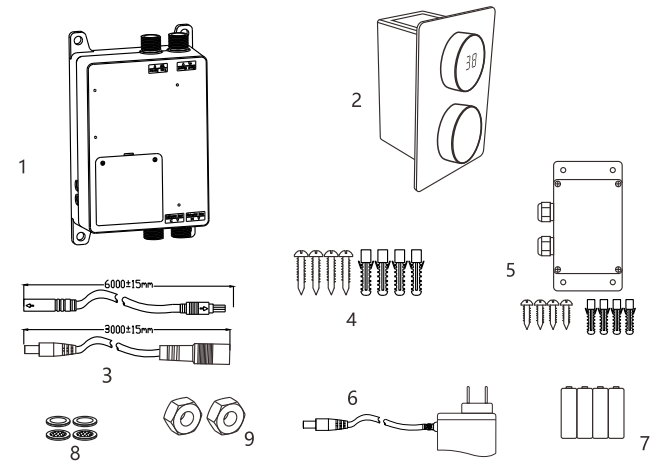
Installation and Operation Manual

H171-2

Attention

- 1. This machine should use tap water and should not use unfiltered and untreated dirty water, otherwise it may cause damage to the valve of the machine.
- 2. The normal water pressure of this product is 0.1Mpa -0.6Mpa. For safety reasons, if it exceeds 0.6Mpa water pressure, please install a pressure reducing valve to ensure the normal use of the system.
- 3. This product does not have heating function. It is recommended to use thermal storage, solar water heaters or centralized heating as the heat source. The maximum hot water temperature that this product can withstand is 85 °C. If not necessary, it is recommended to adjust the hot water temperature below 65 °C.
- 4. To ensure safety, please feel the water temperature with your hand before taking a bath.

List of Accessories



Serial Number	name	Quantity
1	Thermostat host	1
2	Control panel + installation bracket	1
3	Extended control cable and power supply cable (optional)	2
4	ST4X25 (round head belt self-tapping)+Mounting plug	8
5	WIFI box + Installation accessories (optional)	1
6	Power adapter	1
7	Nickel metal hydride battery	4
8	Screen rubber pad + washer	4
9	Screw	2

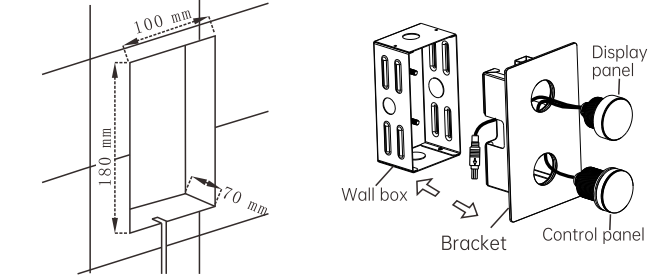
System Introduction

This electronic thermostat shower is intelligent and can automatically adjust the water temperature and flow according to the user's setting and maintain a constant temperature shower supplies. It is composed of display box controller, power adapter, thermostat host and water outlet etc.

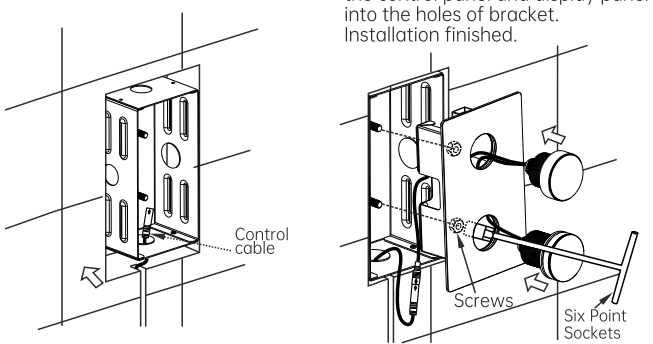
- ① Hand shower
- ② Head shower
- ③ hand shower water pipe
- ④ head shower water pipe
- ⑤ Power socket
- ⑥ Power adapter
- ⑦ Power cable of the thermostat control box
- ⑧ Thermostatic control box
- ⑨ WIFI box (optional)
- ⑩ Cable of control panel
- ⑪ Hot water inlet
- ⑫ Cold water inlet
- ⑬ Cold water source and switch
- ⑭ Hot water source or central heating
- ⑮ Control panel box
- ⑯ Cable connector
- ⑰ Extended cable of the control panel

Control panel installation

- 01 Slot the appropriate position on the wall according to the diagram, and reserve space for placing the power cable.
- 02 Separate the wall box, bracket and keypads.



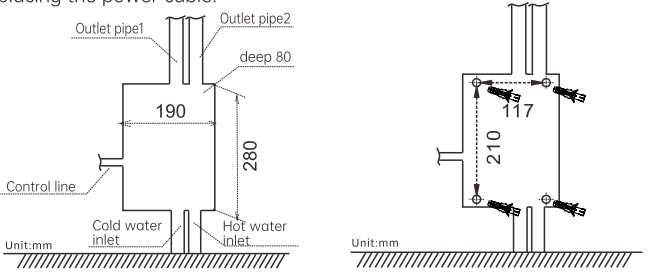
- 03 Put the wall box into the slot, leading the extended control cable and fix it, fix the wall box with cement.
- 04 Connect the control cable of control panel and display panel. Bracket recess mounted into the wall box. Fix it with screws. Fasten the control panel and display panel into the holes of bracket. Installation finished.



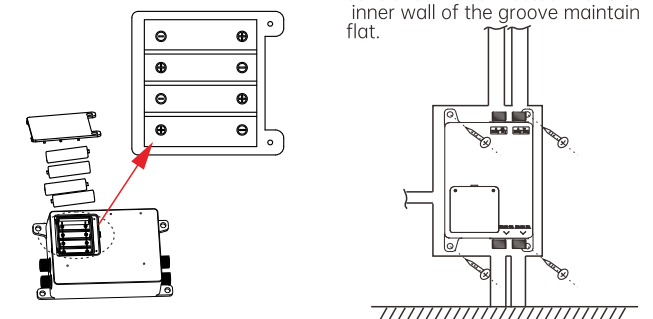
Thermostatic control box installation

There are two host installation methods: concealed wall mounting and installation on the ceiling partition. placed on the ceiling compartment, Directly connect the water pipe and power supply, the following figure mainly introduces the embedded installation

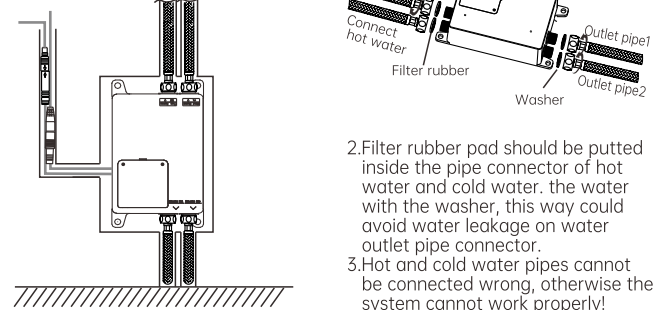
- 01 Slot the appropriate position on the wall according to the diagram, and reserve space for placing the power cable.
- 02 Drill four holes with a diameter of 8mm into the slot and insert the mounting plug.



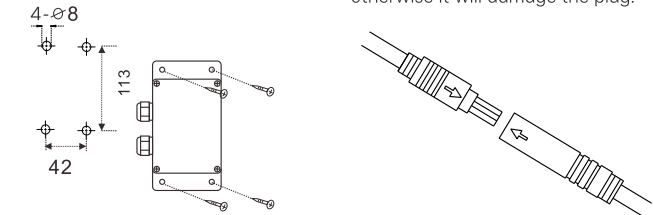
- 03 Install the four batteries into the control box one by one, cover the batteries, and tighten the screws.
- 04 Put the thermostatic control box into the slot, and then tighten it with ST4*25 large flat head screws, so as to ensure that the control box is connected with the inner wall of the groove maintain flat.



- 05 Connect the water pipes and power cables of the control box, connect the water supply, and ensure that the pipes do not leak. Connect the cable of WIFI box (When not equipped with a WiFi box, directly plug in the Extended control cable). then seal the wall with cement and cover the tile.

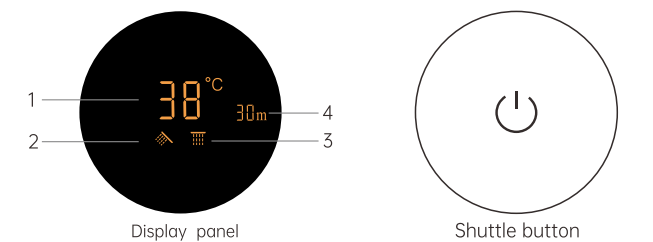


- 06 Open 4 holes as picture shown. Put 4pcs rubber plug into holes and fasten the WIFI box with 4pcs screws.



- Attention: The WIFI box needs to be installed in a location with good WIFI signal, and cannot be installed in metal where the signal is shielded.

Display instructions



- 1. Temperature 2. Hand shower 3. Head shower 4. Countdown indicator

Operating instructions

Standby
When system electrify, all function still not be activated and system is in standby state, backlight is on but no display.

Power On
When system is in standby, short pressing the shuttle button to activate the system and display screen shows current water temperature (default is 38°C), water flow (default is L8), water out from hand shower, default working time is 60 minutes.

User could set water temperature and water flow on keypad. In 10 minutes system power off, setting data will be saved for next time using, but after 10 minutes, system works as default setting.

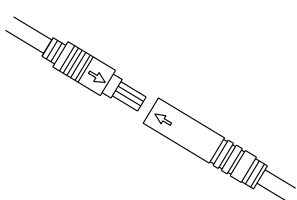
Power off
When system is on, pressing operation button to power off the system. default working time is 60 minutes, when time is up, system power off.

Water TEMP. setting
Water temperature can be adjustable by rotating the shuttle button. Display screen shows "set" and water temperature. Water temperature can be increased by clockwise rotating the shuttle button. Or decrease temperature by anticlockwise rating the shuttle button. If no operation for 5 seconds, temperature setting state will be exit.

Water temperature setting range: 25°C~48°C (77°F~118°F) .

Temperature indication: when the water temperature < 34°C, shuttle button backlight is blue, when water temperature is 34°C~40°C, shuttle button backlight is orange, when water temperature > 40°C, shuttle button backlight is red. (backlight color is changed according to the setting water temperature, after setting for 3 seconds, button backlight restored according to real water temperature.)

- Attention: The plug-in cable must be aligned according to the arrow shown in the diagram in order to be inserted, otherwise it will damage the plug.



When the temperature is adjusted to 25 °C, turn half a turn on the shuttle button counterclockwise, system enter into cold water mode, and the display screen will display "cool". When in cold water mode, turning right for half a turn will exit cold water mode. After exiting cold water mode, the temperature will be set to 25 °C. Cold water mode will be exit automatically when turned off in cold water mode, and restore the default temperature of 38 °C when turns on again.

Flow Setting
When the machine is turned on, press the shuttle and rotate it to set the flow rate. The display screen shows "set" and the set flow rate level. The right shuttle switch will increase the flow rate, while the left shuttle switch will decrease the flow rate. If there is no operation for 5 seconds, the flow rate setting will exit.

Flow setting range: L1~L8 levels.

Spray Switching
After turning on the machine, long press and hold the shuttle to switch between hand shower and head shower modes. The hand shower and head shower cannot be turned on at the same time. After switching, the current icon will be enlarged and underlined, such as "H". Restart the machine within 10 minutes after shutdown and turn on the head shower mode which was set before shutdown.

Overheat Alarm
When system power on, the water outlet is turned on and the water temperature exceeds 49 °C, temperature on the display panel flashes and the overheat protection is activated. The water outlet will be automatically turned off, and the system will be turned off after 3 seconds

Scheduled Shutdown Time:(adjustable only by APP)
When system power on, the display screen shows the timed shutdown time, which is measured in minutes. It will be automatically shut down when the scheduled shutdown time reaches 0.

Default head shower Settings Mode For Initial Power On:
Press and hold the shuttle button in 10 seconds after system power off, system will enter into the default spray mode for preset startup. The "H" icon will be showed in the center of the screen, and you can switch by rotating the shuttle. The selected icon is underlined. After selecting it, press and hold the shuttle to switch to the "°F/°C" selection interface. Press and hold again to exit or press and hold again to directly start the system. (If the power is cut off and the power is turned on again, the spraying mode which was set just now will be turned on, which is invalid at other times).

Switching Between Fahrenheit And Celsius
Press and hold the shuttle button in 10 seconds after system power off. system enter into the default spray mode for preset startup. Press and hold it again to enter the temperature icon switching interface. Rotating the shuttle button to switch temperature unit between Celsius and Fahrenheit. After setting, keep pressing the shuttle button to exit or short press it once to directly start up.

Communication Failure
If there is no connection or connection failure between the shuttle button and the display keypad, it cannot be turned on. If a fault occurs again after turning on, it will be forced to shut down

WIFI (optional)
If the WIFI box is connected (with an "W" icon in the upper left corner when turning on), perform the APP operation guide for network configuration.

(if no need WIFI function, just short pressing and turn on the system directly), Wait until the "W" icon flashes and follow the APP operation guide. After WIFI matched successfully, the "W" icon will be changed from flashing to constantly on. At this point, you can press and hold to exit or short press to power on.

Technical parameter

Working conditions and technical data					
Rated voltage	AC110-240V	Rated frequency	50/60Hz	Rated power	5W
Insulation resistance	>20MΩ	Waterproof rating	IPX4		
Load matching					
Loading	Rated voltage	Frequency	Rated power	Other	
Switching solenoid valve	DC12V	-	2W	-	
Water flow valve	DC5V	-	1W	-	
Thermostatic valve	DC12V	-	2W	-	

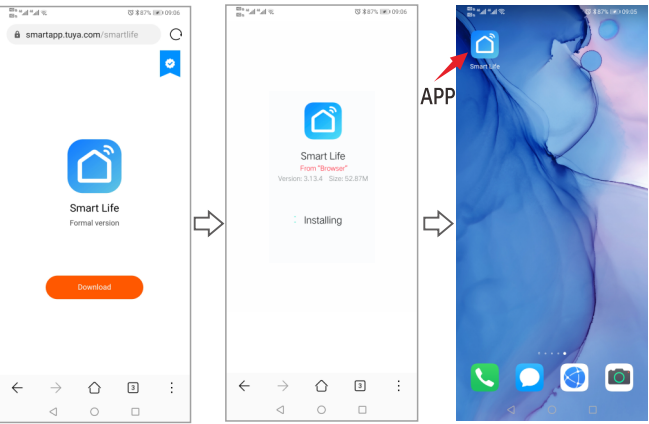
Guide to use APP on mobile

1.Download APP on Mobile

Scan QR code to install APP on mobile.
We could search "smart life" on Android or Apple APP store

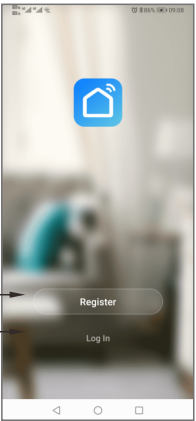


Enter download interface as show on pictures, click"download", choose "regular download"to download. The APP can be downloaded and installed.



2.User registration and sign in

Click APP logo"Smart Life" to enter into login interface as picture shown, if it's first time login, need to register new user account as guide.

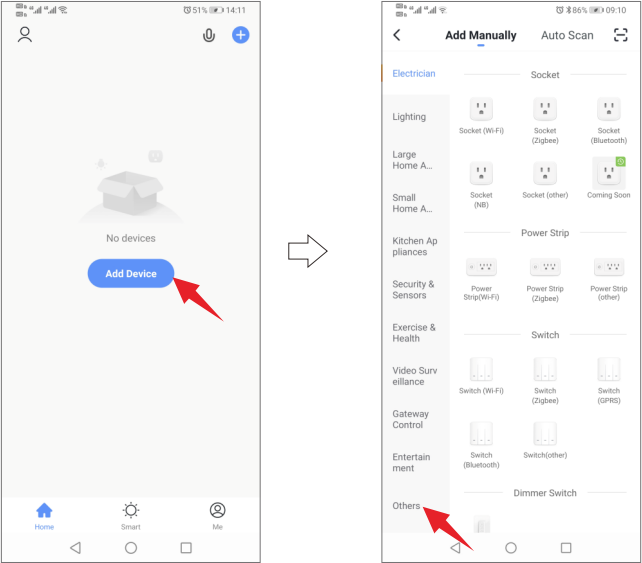


3.Add shower panel to the APP list

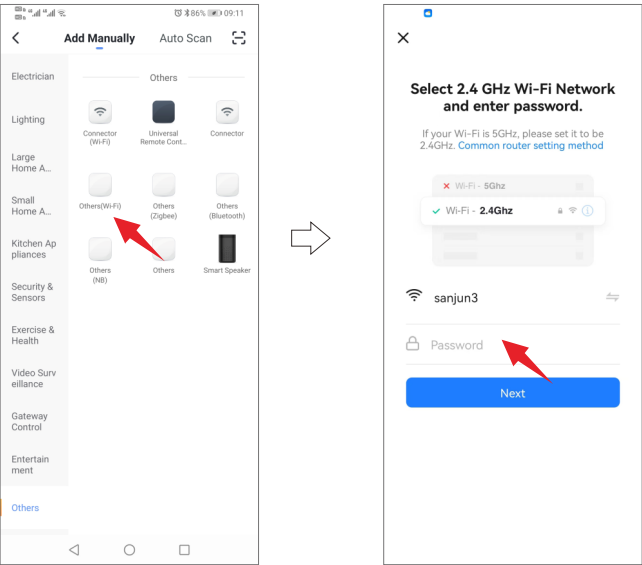
(1) Power on → After turning off (within 10 seconds), press the shuttle button and do not release it (press + rotate). Immediately rotating the shuttle button anticlockwise for 3 spaces →Right for 3 spaces →Left for 3 spaces →Right for 3 spaces and release it. The display screen shows the "📶" icon. At this time, press and hold the shuttle button again to enter into WIFI matching state.

(2) Add shower controller into APP list.

When WIFI box is in matching state, please enter WIFI password on APP as picture below: click "Next" to enter the configuration WIFI operation.

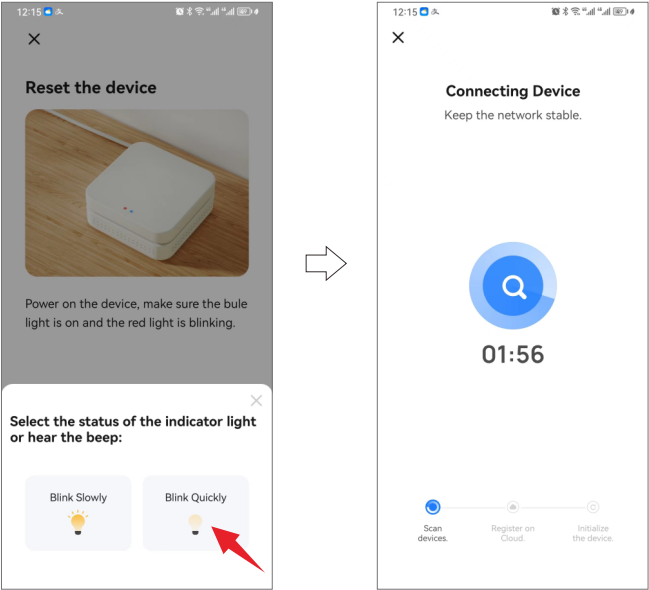


①Click"Add Device" ② Click "others"

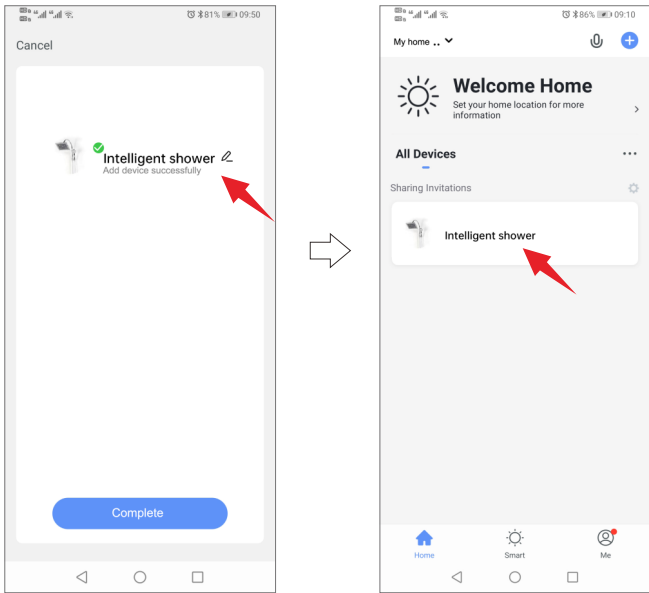


③ In others to choose "Others(Wi-Fi)" ④Input WIFI password

(3) After successful configuration, generate the device and enter the device operation interface.

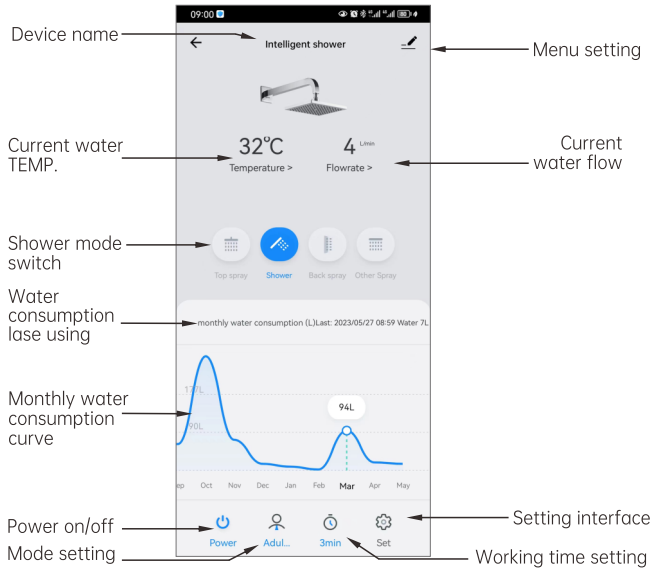


①Click"Blink Quickly" ② Waiting to add device



③Change device name, Click "Complete" ④Click device,Enter operation interface

4.Operation interface of shower controller on APP

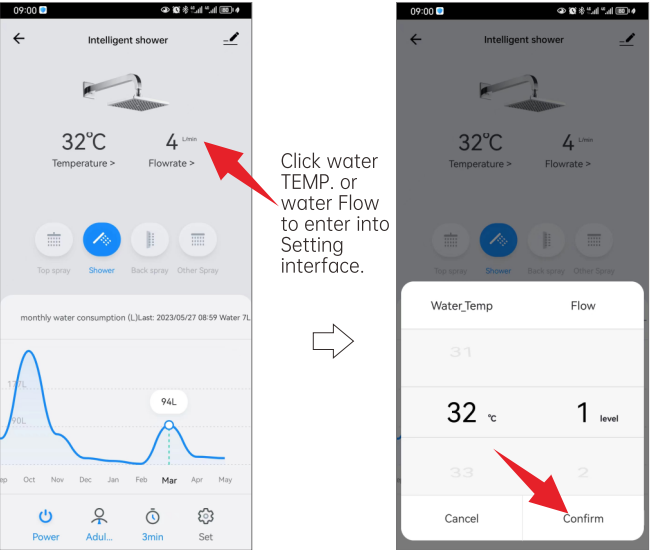


Note:
When shower system turn on by APP, "Top spray" icon means Head shower, "Shower" means hand shower. Pressing the APP "back spray" or "Other Spray" did not respond.

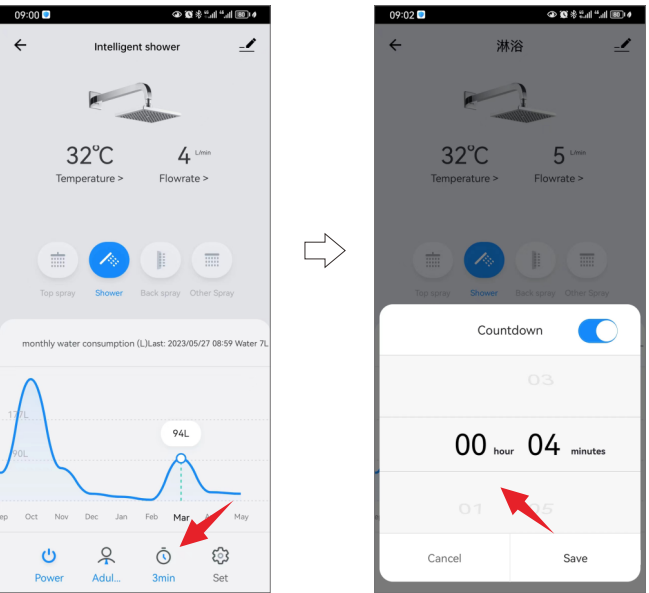
*This product does not support the functions of 'Mode setting', 'Settings Automatic Learning', 'Settings Child Lock', and 'Settings Calibration Time'.

5.Water temperature setting

In the setting interface of water temperature, slide up and down in the outlet water temperature area to set the water temperature, click"confirm"to confirm the setting, click "Cancel" to cancel the setting water temperature.



6. Working time setting



Click icon to set working time by slide
Adjust the workingTime by slide up and down

7. Setting interface

